

FLOATING FRAME INFORMATION, PRICE LIST, and ORDER FORM

*Frames are square, about 0.8 inches thick, except Extra Small is about 0.7 inches thick.

*The round base and the flat base fit all size frames except the Extra Small frame.

*If a base is wanted for Extra Small frame, round base will work, but it's a looser fit.

*All measurements are approximate with minor variations. *Frames are sold unbranded.

*Custom logo can be printed on frame for large quantities

Shipping, if required, is NOT included. It is possible to pick-up large orders in Clearwater, Florida.

To order:

Send email to sales@fossils.com

OR

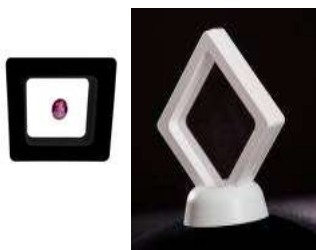
Call or text 727 415 9592

Volume Discount!

| Model Number | Square Frame Sizes | Length & Width External Size | Length & Width Membrane Size | Weight per Frame (oz) | Retail | Saves 20% |
|--------------|--------------------|------------------------------|------------------------------|-----------------------|--------------------|--------------------|
| | | | | | 1 Piece Unit Price | 10 Pack Unit Price |
| FF_50x50 | Extra Small (XS) | 50 mm (2 inch) | 34 mm (1.35 inch) | 0.56 | \$3.50 | \$2.80 |
| FF_70x70 | Small (S) | 70 mm (2.75 inch) | 54 mm (2.1 inch) | 0.94 | \$4.00 | \$3.20 |
| FF_90x90 | Medium (M) | 90 mm (3.5 inch) | 71 mm (2.8 inch) | 1.43 | \$5.00 | \$4.00 |
| FF_110x110 | Large (L) | 110 mm (4.25 inch) | 92 mm (3.6 inch) | 1.85 | \$6.00 | \$4.80 |
| FF_180x180 | Extra Large (XL) | 180 mm (7.1 inch) | 156 mm (6.15 inch) | 3.57 | \$9.50 | \$7.60 |
| FF_300x110 | XL - Rectangular | 300x110 mm (11.75in) | 156 mm (6.15 inch) | 3.57 | \$9.50 | \$7.60 |

| | | | | | |
|--------|-----------------|-------------------|------|--------|--------|
| Base_R | Round Base | 2.2 inch diameter | 0.19 | \$0.50 | \$0.40 |
| Base_F | Flat Base Pairs | 1.8 by 0.6 inch | 0.14 | \$0.50 | \$0.40 |

We recommend climate controlled storage; our testing indicated that membrane clarity can be reduced after prolonged exposure to temperatures above 140 degrees F



| Model Number | Square Frame Sizes | Input Quantity of Frames You Want | | Total Frames | Unit Price Per Frame | Total Frame Cost |
|---------------------|--------------------|-----------------------------------|---------|--------------|----------------------|------------------|
| | | (White) | (Black) | | | |
| FF_50x50 | Extra Small (XS) | | | | | |
| FF_70x70 | Small (S) | | | | | |
| FF_90x90 | Medium (M) | | | | | |
| FF_110x110 | Large (L) | | | | | |
| FF_180x180 | Extra Large (XL) | | | | | |
| FF_300x110 | XL - Rectangular | | | | | |
| Total Frames | | | | | | |

| Base | Base Quantity | Base Quantity | Total Bases | Unit Price Per Base | Total Base Cost |
|--------------------|-----------------|---------------|-------------|---------------------|-----------------|
| | | | | | |
| Base_F | Flat Base Pairs | | | | |
| Total Bases | | | | | |

| |
|------|
| Date |
| |

| | |
|--|--|
| Estimated frames order weight (pounds) | |
| Estimated bases order weight (pounds) | |

Shipping calculated to mailing address

| |
|--------------------------|
| Shipping (if applicable) |
| Tax (if applicable) |

| | |
|--------------------------------------|--|
| Estimated Total Weight (without box) | |
|--------------------------------------|--|

| |
|-------------------|
| Total Cost |
|-------------------|

| | | | |
|--------------|--|------------------|--|
| Name | | Company | |
| Email | | Resale TAX ID | |
| Phone Number | | Mailing Address | |
| Website | | City, State, Zip | |

